

We retain the property of this drawing by law. The drawing cannot be copied or made available to third parties or competitors in any way without our prior authorisation.

01 02 03 04 05 06 07 08 09 10 11 12

COLOR CODE:

44

AA

88

99

55

00



CHI7037

CHI7038

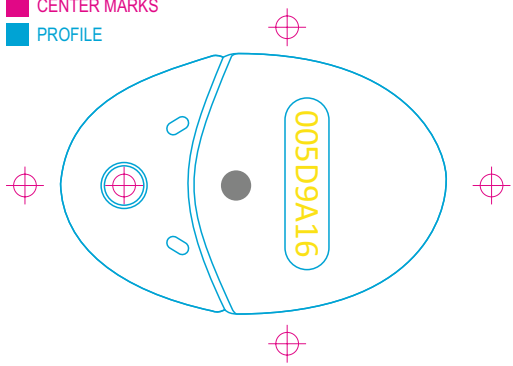
CHI7039

CHI7040

CHI7041

CHI7043

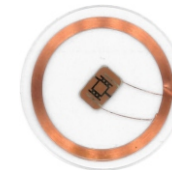
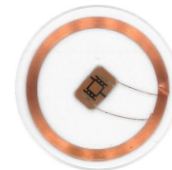
- LASER ETCHING
- S/N CODE
- CENTER MARKS
- PROFILE



COLOR CODE:

BB

BB



CHI7042

CHI7042

* MIFARE CHIP IC CODE: MF1
UEL TAG CODE: 37-13561-00A

* FDI KEY IN KEY-A AND KEY-B fields

-	13/09/2017	A. MOLITERNO	UPDATE INSTRUCTIONS (S/N CODE ORIENTATION)
A	07/09/2017	A. MOLITERNO	ADDED COLOUR CODES INTO MIFARE CHIPS
Rev.	DATE	DRAFTSMAN	REVISION DESCRIPTION
urmet			DOCUMENT DESCRIPTION: LASER ETCHING SPECIFICATIONS
DRAFTSMAN: A. MOLITERNO			DOCUMENT REFERENCE: DV1723-008A
CHECKED BY: M. NOVERO			SHEET 1 OF 1
APPROVED BY: ING. G. MINARELLI			LINKED DOCUMENTS:
DATE: 02/08/2017			APPLICATION: SINGLE-USER / 2-USER KIT WITH PANEL AND 7" COLOUR HANDS-FREE MONITOR Ref. 1723/71 - 1723/72
DEPT.: ST/SBU2			
SCALE:	GENERAL TOLERANCE:	UNITS OF MEAS.:	MATERIAL:
			COMPONENT CODE: see drawing

01 02 03 04 05 06 07 08 09 10 11 12